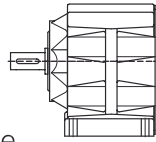


### 3 模块化系统概览

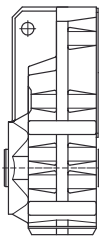
Getriebeausführung  
Gear design  
齿轮设计

BG



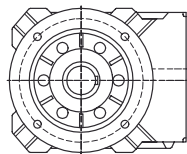
Stirradgetriebe  
Helical gear  
同轴式齿轮减速箱

BF



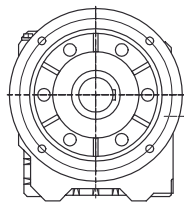
Flachgetriebe  
Shaft-mounted gear  
平行轴式齿轮减速箱

BK



Kegelradgetriebe  
Bevel gear  
直角轴式齿轮减速箱

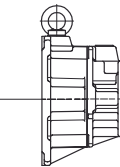
BS



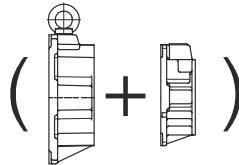
Schneckenradgetriebe  
Worm gear  
蜗轮蜗杆式齿轮减速箱

Motorausführung  
Klemmenkästen  
Motor terminal box  
电机接线盒设计

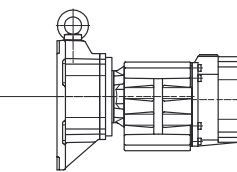
Systemdeckel  
System cover  
系统盖



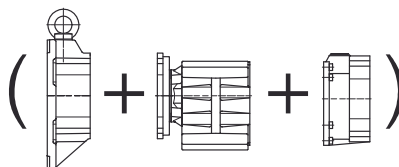
Vorstufe  
Pre-stage  
前阶段减速



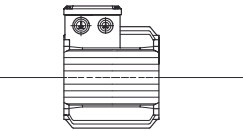
Vorstufe + Systemdeckel  
Pre-stage + System cover  
前阶段 + 系统盖



Zwischengetriebe  
Intermediate gear  
中间变速级



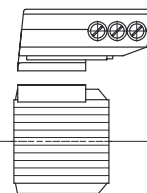
(Systemdeckel + Zwischengetriebe + Systemdeckel)  
(System cover + Intermediate gear + System cover)  
(系统盖 + 中间变速级 + 系统盖)



Motor mit  
angegebenem  
Klemmenkasten  
(KAG)  
Motor with cast-on  
terminal box (KAG)  
铸造一体式  
终端接线盒 (KAG)



Motor mit  
angeschraubten  
Klemmenkasten (TB)  
Motor with screw-on  
terminal box (TB)  
螺栓固定式  
终端接线盒 (TB)



Motor mit  
ETA-K-Umrichter  
Motor with  
ETA-K-Converter  
ETA 变频器控制  
电机

Lüfterhauben  
B-Lagerschilde  
Covers  
B-side  
电机后盖

Motoranbauten  
Motor extensions  
电机扩展部件

Bremsenanbauten  
Brake extensions  
制动器扩展部件

